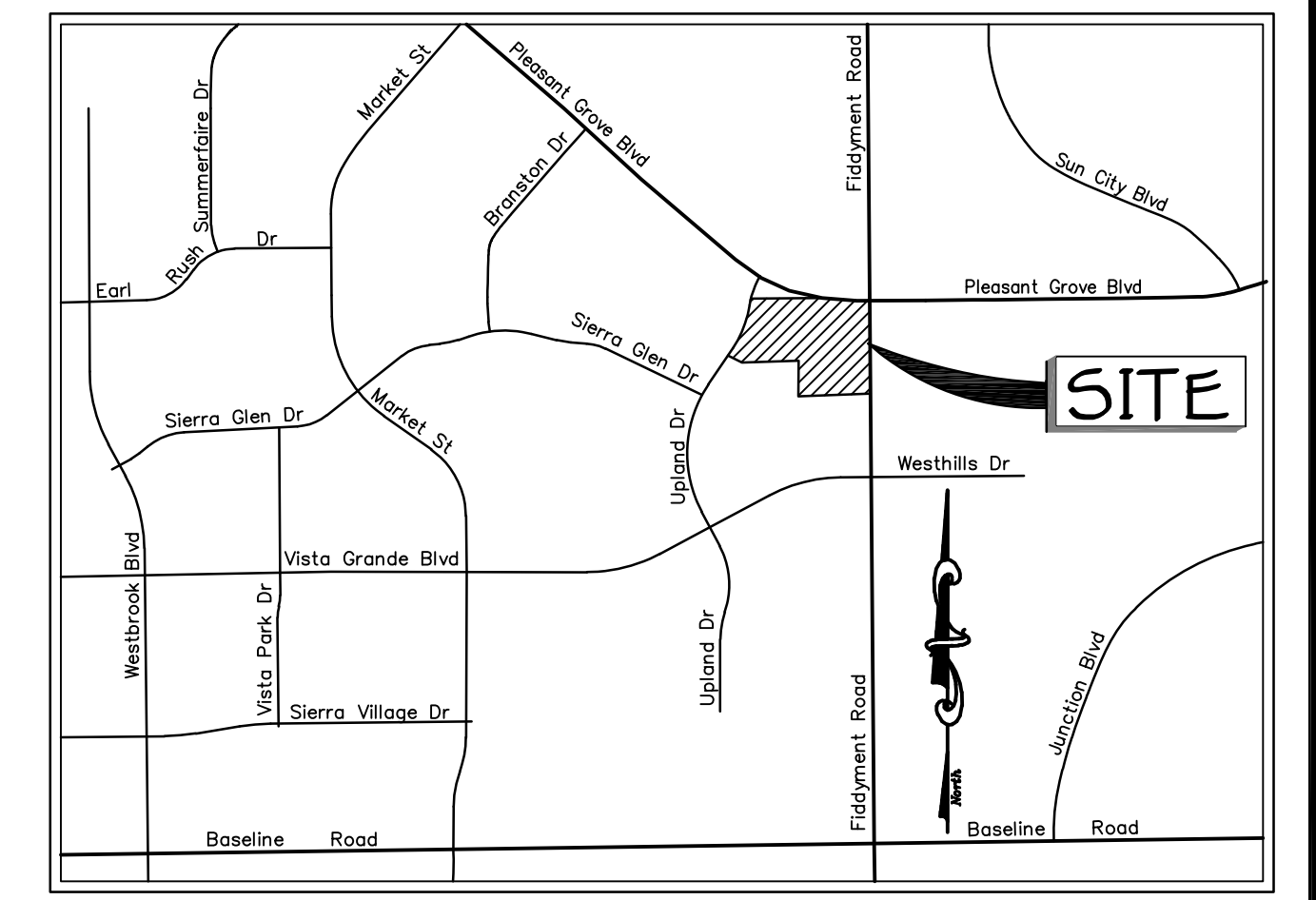
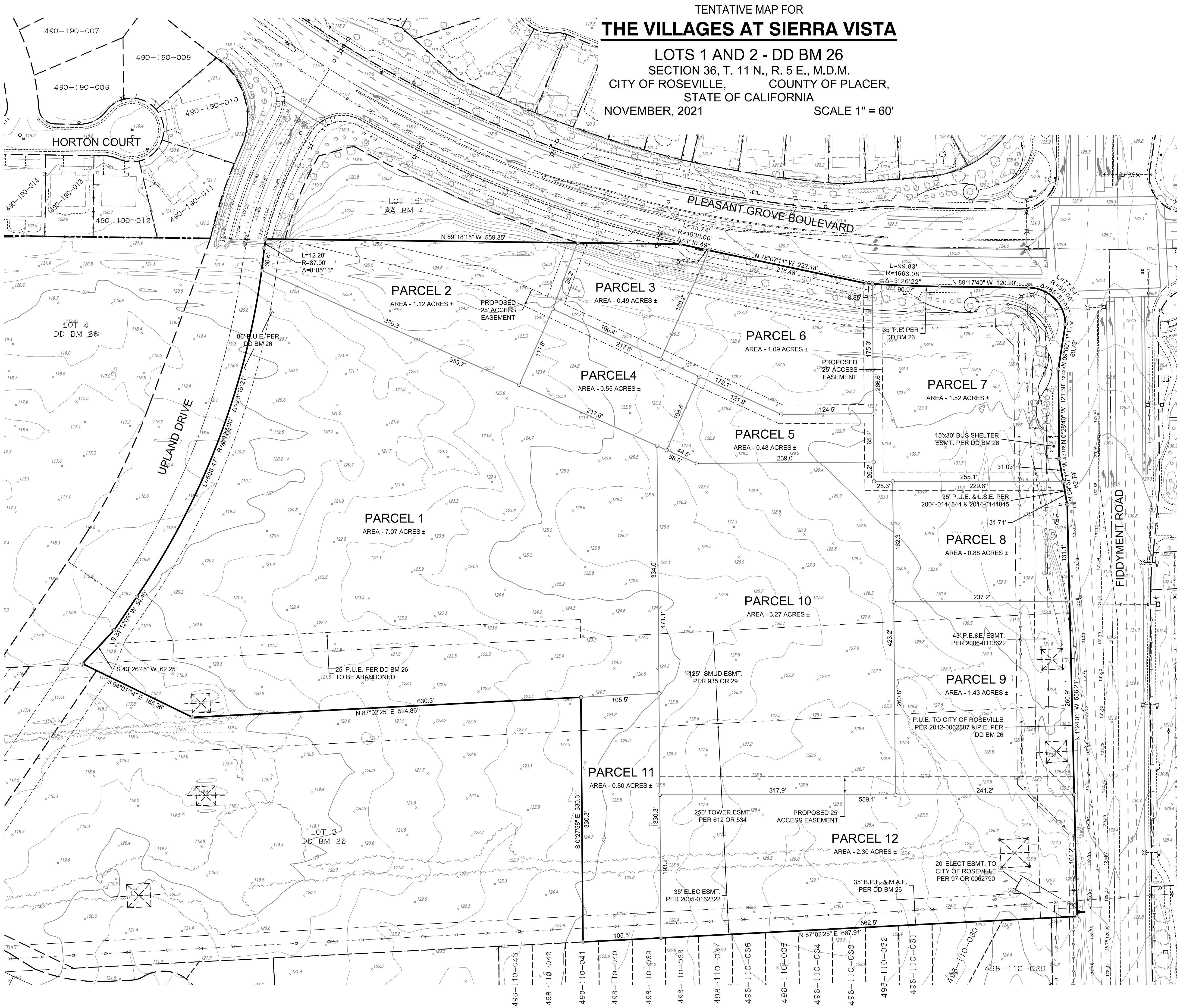


TENTATIVE MAP FOR  
**THE VILLAGES AT SIERRA VISTA**  
LOTS 1 AND 2 - DD BM 26  
SECTION 36, T. 11 N., R. 5 E., M.D.M.  
CITY OF ROSEVILLE, COUNTY OF PLACER,  
STATE OF CALIFORNIA  
NOVEMBER, 2021 SCALE 1" = 60'



**VICINITY MAP**  
Not to Scale

**Owner:**  
Mourier Investments, LLC,  
1430 Blue Oaks Boulevard, Ste. 190  
Roseville, CA 95678  
PH. (916) 969-2842

**Engineer:**  
Baker Williams Engineering Group  
6020 Rutland Drive, Suite #19  
Carmichael, CA 95608  
Ph. (916) 331-4336  
office@bwengineers.com

**General Plan Designation**  
LOT 1 - HDR - High Density Residential  
LOTS 2 THRU 12 - CC - Community Commercial

**Zoning:**  
LOT 1 - R3  
LOTS 2 THRU 12 - CC

**Existing Use:**  
Vacant

**Proposed Use:**  
Vacant

**Assessor's Parcel Nos.**  
498-010-023  
498-010-024

